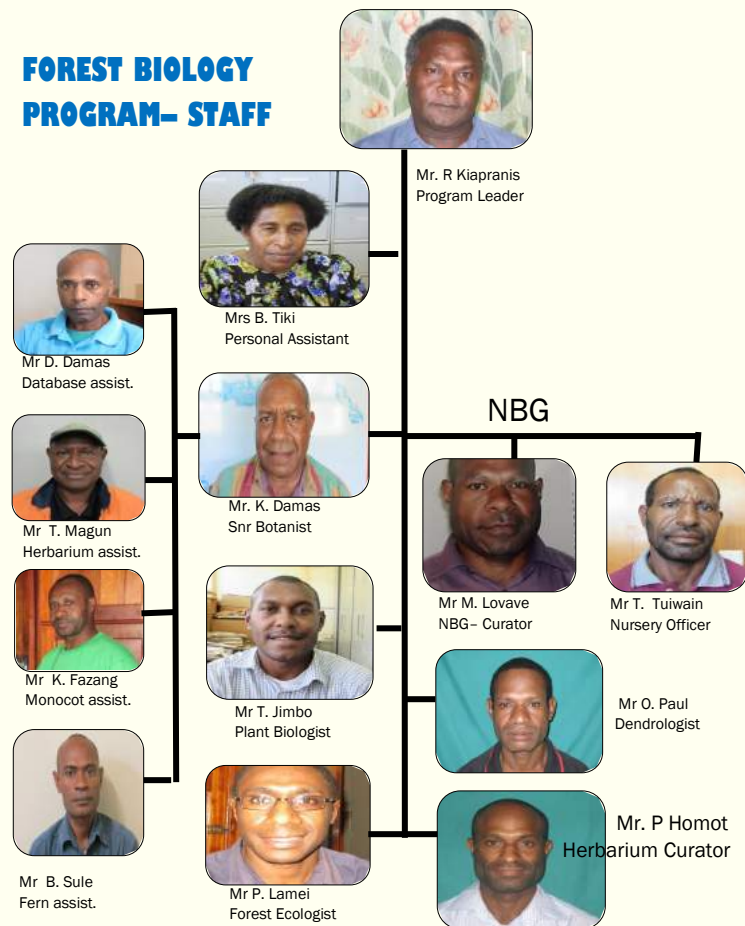


PUBLICATIONS

1. Andrew S Barfort, R. Banka, John L Dowe (2001) Field Guide to Palms of PNG with a multi-access key and notes on the genera (1st edition) K60.00
2. B. Verdcourt (1979) A Manual of New Guinea Legjums. Botany Bulletin No. 10 K29.20
3. Department of Forest (19xx). Manual of Forest trees in PNG. Part 1 (rev.) COMBRETACEAE K7.75
4. Department of Forest (19xx). Manual of Forest Trees in PNG. Part 3. (rev) STERCULIACEAE K7.75
5. Department of Forest (19xx). Manual of Forest Trees in PNG. Part 4. (rev) ANACARDIACEAE K7.75
6. E.E. Henty (1969). A Manual of New Guinea Grasses Botany Bulletin No. 1 K13.80
7. E.E Henty (1980). Harmful Plants in Papua New Guinea. Botany Bulletin No. 12 K15.00
8. E.E. Henty and G.H Pritchard (1982). Weeds of New Guinea and their control. Botany Bulletin No.17 K21.50
9. Ellen Woodley (1991). Medicinal Plants of PNG. Wau Ecology Institute handbook No. 1 Part 1. Morobe Province. K34.70
10. JJ Harvel (1975). Training Manual for the Forestry College. Vol. 3 Forest Botany Part 2 Botanical Taxonomy . K18.20 * out of stock
11. JS Womersley (1976). Plant collecting for Anthropologists, Geographers and Ecologists in PNG. K10.00
12. JS Womersley (1978). Handbooks of the Flora of PNG, Vol. 1. K71.00
13. JS Womersley and McAdam (1975). The Forest conditions of the Territories of PNG. K7.75
14. M. Percival & JS Womersley (1975). Floristic and Ecology of Mangrove Vegetation of PNG. Botany Bulletin No.8 (soft cover) K15.00.
15. O.W Borell (1989). A n Annotated Checklist of the Flora of the Kairuru Island. K38.00
16. P.F Stevens & J.F Veldkamp (1980). Report of Mt. Sucking in 1972. Botany Bulletin No. 10 K10.50
17. PG Peekel translated by EE Henty (1984). Flora of Bismarck Archipelago for Naturalists. K38.00
18. R. Holt (1992). Plants of New Guinea and Solomon Island. Dictionary of the Genera and Families of Flowering plants and ferns. Revision of Botany Bulletin No.3 K21.50
19. Tim Platts- Mills (19xx). Useful Plants of Salemben Village. Madang Province, PNG. K15.00
20. William J. Baker, John Dransfield (2006). Field Guide to palms of New guinea (2nd editon) K35.00

FOREST BIOLOGY PROGRAM- STAFF



CONTACT INFORMATION:

Forest Biology Program,
P.O Box 314, LAE- 411,
Morobe Province.

Tel: +675 472 4188

Fax: +675 472 4357

Email: phomot@fri.pngfa.gov.pg

THEME:

"Studies into PNG's diverse and rich
flora their conservation, storage and
dissemination of botanical information
is our PRIORITY"



FOREST BIOLOGY PROGRAM

PNG Forest Research Institute (FRI)

Aim:

"To maintain the botanical collections to a credible international standard and to ensure that key elements of the forest biota are recognized through identification and ecological investigation".

CURRENT PROJECTS

1. FLORICULTURE PROJECT (ACIAR funded project since 2012)

This project is a collaboration between PNGFRI & NARI. The officer in charge is Mr Florian Yatukoman. The aim of the project is to do research into this potential industry by doing collections, identifying potential valuable flowers and supporting the local farmers with trainings and information on the floriculture industry.

2. WEED SURVEY DOCUMENTATION (Funded by PNG FA)

This project is done by Mr Tiberius JIMBO. The aim and objective of this project is to document all the weeds of PNG that are growing in the PNGFA plantations. Research work is done by doing collections in certain plantations and doing identifications to find out the variety of weeds that are invading the plantations. In doing that, we can know or tell which species is very dangerous when studying the growth of the trees and doing comparisons against the data collected according to certain designs and previous studies.

3. REVIEW OF SYZYGIUM (Funded by PNGFA)

This is a continual taxonomical project which Mr Kipiro Damas (senior Botanist) has been working on. The aim is to study these genus and do comparison according previous studies so that these species shouldn't be miss- identified for PNG collections in the herbarium and other international neighbouring countries sharing borders with us.

⇒ LAE BOTANICAL GARDENS

Maintenance and operations;

- Nursery operation
- Public amenities
- Orchid garden
- Lawns
- Ex-situ Conservation
- Supports research and educational activities.
- Hosts world events like World Environment Day, World Aids, Carols by candle light, etc.



Orchid garden

PUBLIC SERVICES

We also provide services and expertise on;

1. Plant identification services.
2. Forensic services to Police Department.
3. Consultation services to public & private entities.
4. Education services to schools
5. Environment Impact Assessment consultation
6. Forest Resources Inventory services
7. Hire & sale of potted plants
8. Hire of sale of potted plants
9. Hire of BBQ sheds in the Lae Botanical Gardens.
10. Process export permit for research plant materials



Polytech students



Palms collection



Maintenance of Begonia & Aroid Collections



Cordyline Germplasm

Conservation and protection of Biodiversity is utmost in PNG where the boom in natural resources exploitation is at its peak. The damages to plants and Habitat in the name development can contribute to the extinction of certain plant species in CITES and IUCN lists and other native plant species.

Forest Biology Program continues to ensure that PNG's flora is well documented and proper updated identifications are done to the 300,00+ and 2335 TYPE plant specimens collected and stored at the herbarium whilst maintaining the operations of the Lae Botanical Gardens for the benefit of the public.



Fruit collection for ex-situ conservation (Cynometra katikii)



Photo showing the very important TYPE SPECIMENS



Team discussing on Musak FMA area.



ACTIVITIES & SERVICES

The Forest Biology Program conducts research activities and provides services on;

1. Documentation of PNG's Flora

- ◆ Botanical exploration on unexplored areas.
- ◆ Studies into rare & endangered plants species and their conservation.
- ◆ Taxonomical studies into certain plant families/ genera.

2. Tree Species Key Project

- ◆ Document PNG's timber tree species which produce an interactive key to timber trees of PNG and now available online.

- ◆ Data basing timber trees and continue to score characteristics for those trees not scored.

3. Forest Ecology Studies

- ◆ Ecological studies into relationship between plants and their existence in a given environment.

4. Forest Resource Assessment

- ◆ Carry out forest inventories to ascertain composition of timber stock and species enumeration.
- ⇒ Maintains curatorial duties:
- Stores PNG & other countries botanical collections accessed from any where around the world through

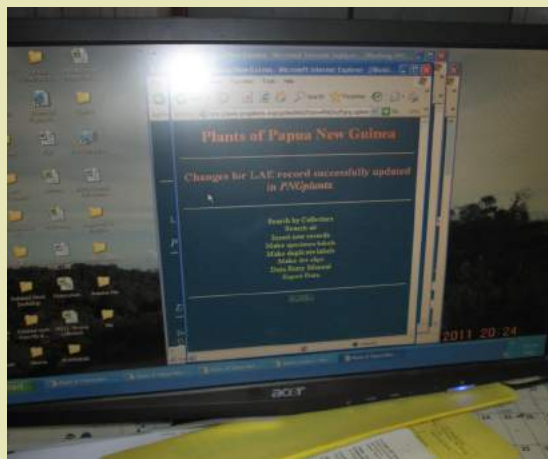


- PNGPLANTS website.
- Supports taxonomical studies.
- Botany Library resources
- Specimen exchange (Loan) with other herbaria and researchers.
- Processes new collections routinely

- Stores TYPE specimens, spirit collections and voucher specimens.

5. PNGPLANTS Data base website project

- ◆ Data basing of all specimens collected and stored into the herbarium.
- ◆ Enables other scientists or general public to view and gather information through their desk top/ lap-top/ mobile phones if connected to internet.



www.pngplants.org

Continued;

4. REVIEW OF RHIZOPHORACEAE (Funded by PNGFA)

Rhizophoraceae is a main family species mostly found in the mangrove community or its sometimes referred to as mangroves. Officer doing this review is Mr Peter HOMOT. The main aim of this project is produce a checklist of different mangrove species found in PNG and also to provide an update of the species composition of mangrove communities from the coastline within the selected scope of areas for studying.

5. FIELD COLLECTIONS FOR HORTICULTURE, RARE PLANTS and MAINTENANCE OF GERMPLASM (Funded by PNGFA)

Again this is a project done by Mr Tiberius JIMBO which is basically to collect plants that are identified as rare, endemic, threatened or lesser known and maintain them in an ex-situ area (botanical garden). This study involves collecting wildings, seedlings (saplings), seeds and other materials for propagation in Lae Bot. Garden. Main aim is increase the variety of germplasms in the garden.

6. FIVE (5) MAJOR COMMERCIAL SPECIES OF MIDDLE RAMU FMA; Implication on environmental factors limiting their distribution along successional gradients (Funded by PNGFA)

Study done by Mr. Penniel LAMEI is aim at improving and identifying the forest of Ramu Block 1FMA and providing information on the distribution of the 5- major commercial species in that area including factors that affects the rainfall and soil components of the area. The output expected of this project is to improve the PNG LCOP, Minimise damage to soil and maintains soil integrity, provide forest management strategies for decision making and observe relationships between factors affecting species distribution.